



PRESERVED HISTORIC BRIDGE –LAKESHORE DRIVE BRIDGE

CLOSED LAKESHORE DRIVE

PULASKI COUNTY

MASONRY ARCH

CROSSES - DRAINAGE DITCH

DATE OF CONSTRUCTION – 1939

BUILDER - METROPOLITAN TRUST COMPANY, NORTH LITTLE ROCK, AR

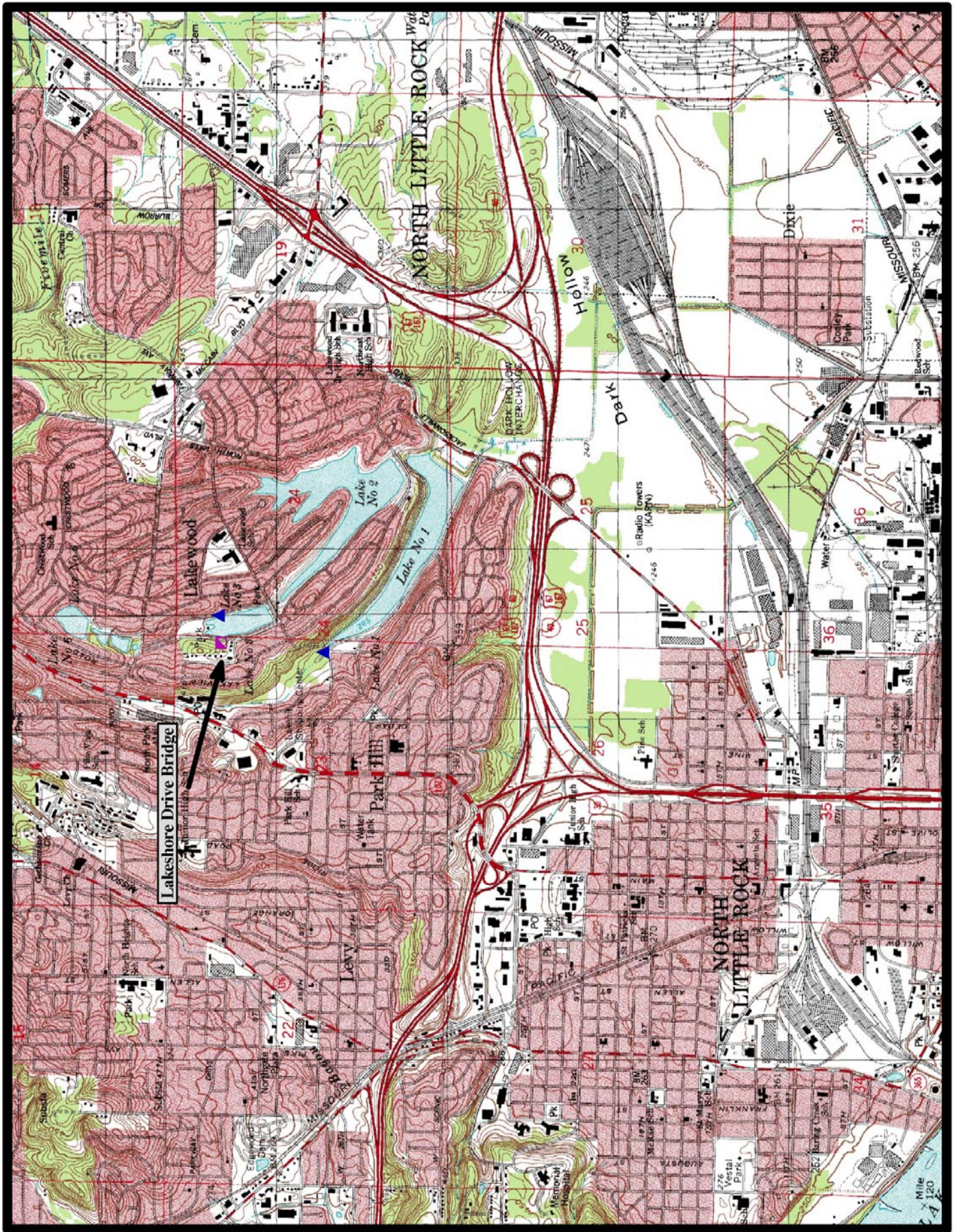
HISTORIC BRIDGE INVENTORY DATE - 1995

SHPO NUMBER – PU2028

HAER NUMBER - AR-52

DATE LISTED ON NATIONAL REGISTER - 4/9/1990

LAT./LONG. 34:47:40.54, -92:15:06.22

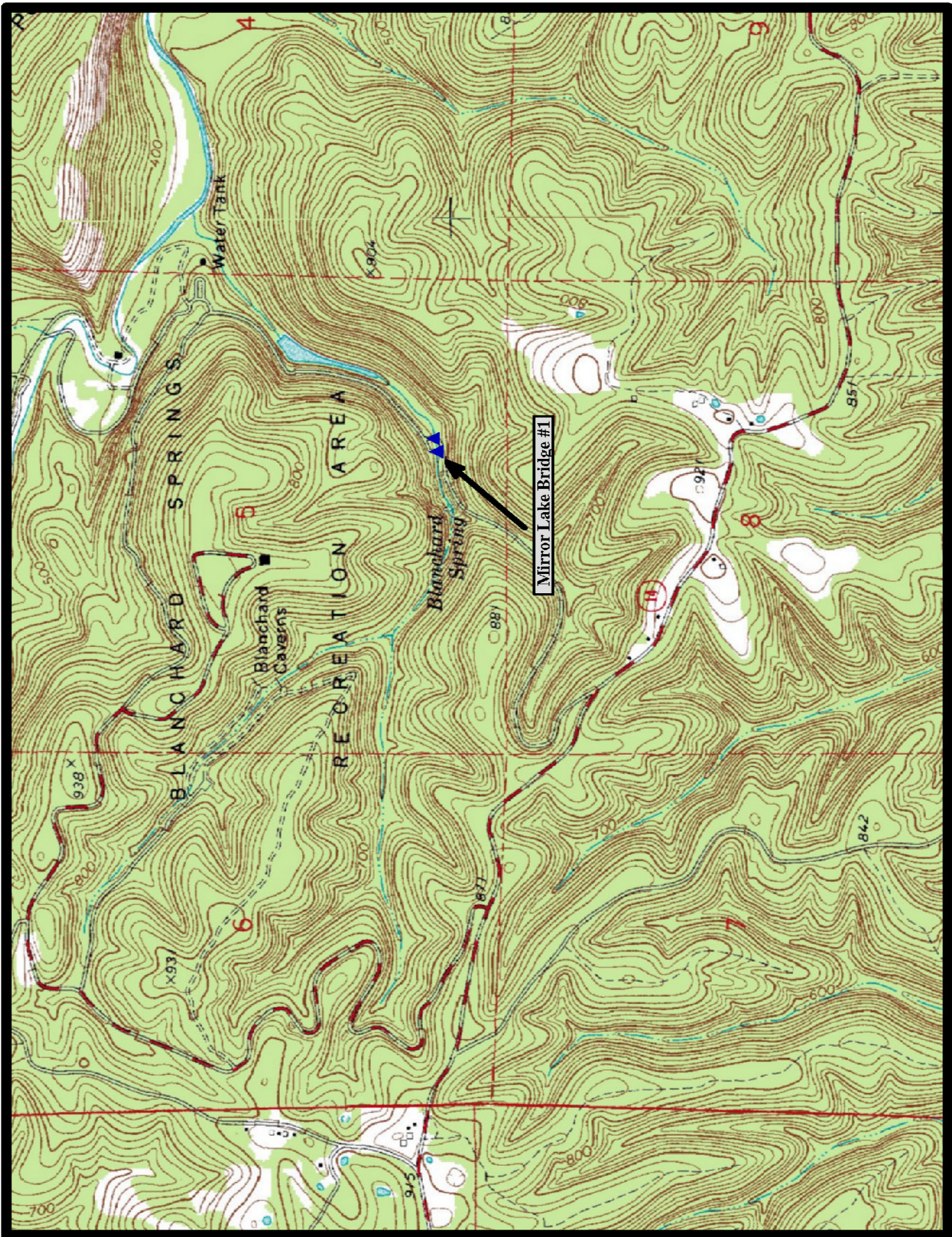


North Little Rock 7.5 min. Quad





HISTORIC BRIDGE – MIRROR LAKE BRIDGE #1
FOREST SERVICE ROAD (FSR) 1110
STONE COUNTY
MASONRY ARCH
CROSSES - BLANCHARD SPRINGS DRAINAGE
DATE OF CONSTRUCTION – 1935
BUILDER - CIVILIAN CONSERVATION CORPS (CCC)
HISTORIC BRIDGE INVENTORY DATE - 1995
SHPO NUMBER – ST0290
HAER NUMBER -
DATE LISTED ON NATIONAL REGISTER - 9/11/1995
LAT./LONG. 35:57:31.79, -92:10:32.13

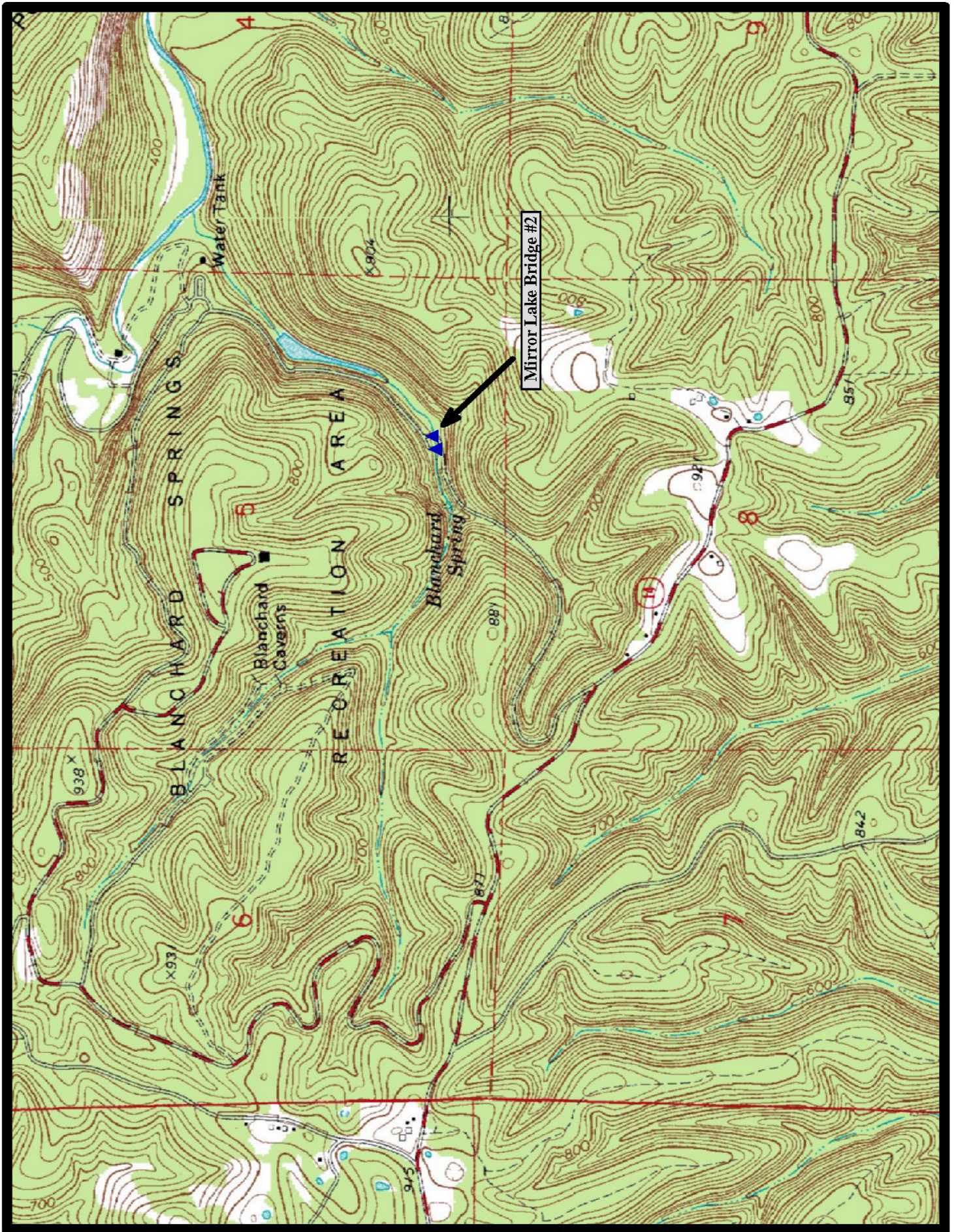


↑
North

Fifty-Six 7.5 min. Quad



HISTORIC BRIDGE – MIRROR LAKE BRIDGE #2
FOREST SERVICE ROAD (FSR) 1110
STONE COUNTY
MASONRY ARCH
CROSSES - BLANCHARD SPRINGS DRAINAGE
DATE OF CONSTRUCTION – 1935
BUILDER - CIVILIAN CONSERVATION CORPS (CCC)
HISTORIC BRIDGE INVENTORY DATE - 1995
SHPO NUMBER – ST0290
HAER NUMBER -
DATE LISTED ON NATIONAL REGISTER - 9/11/1995
LAT./LONG. 35:57:31.96, -92:10:30.66

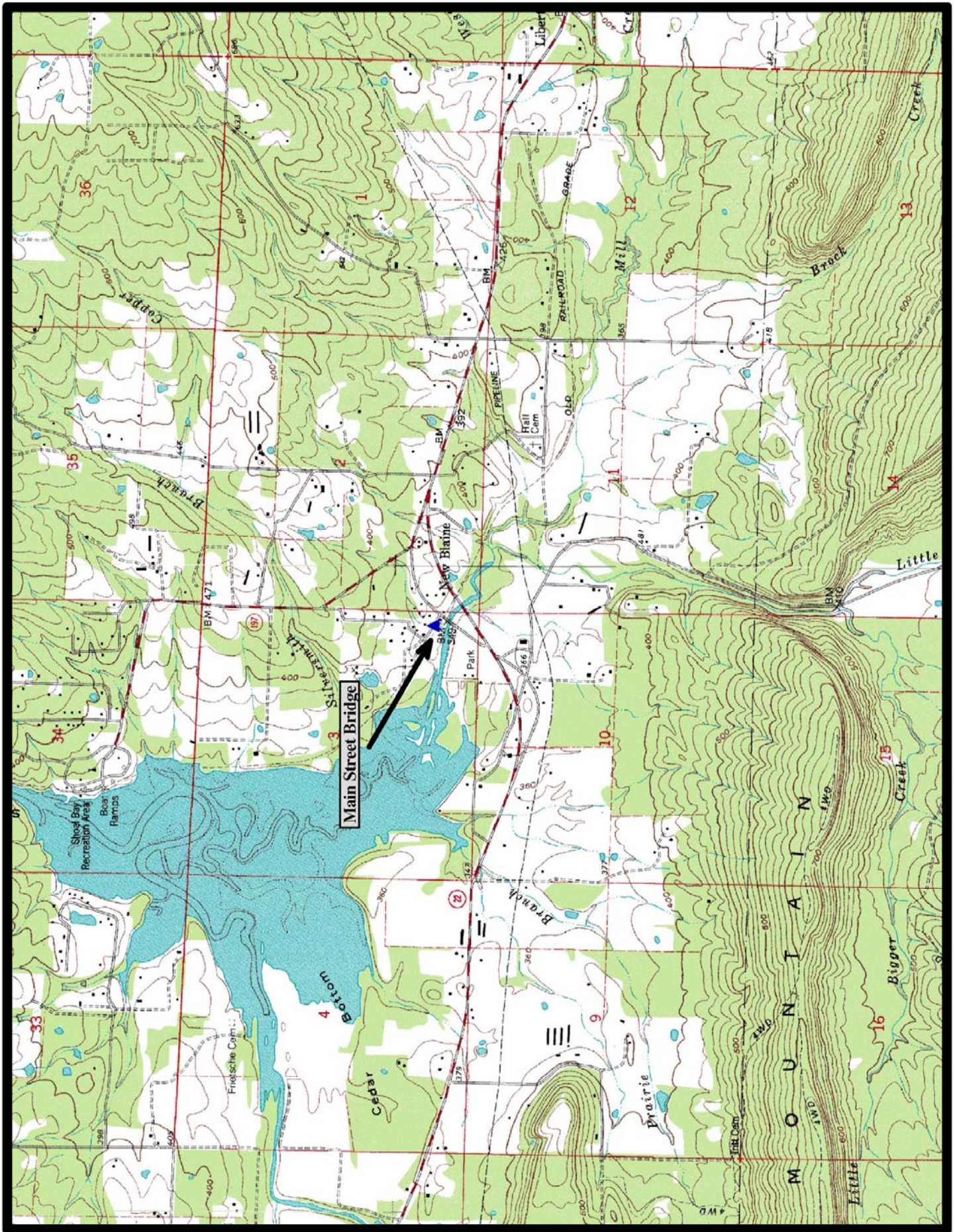


↑
North

Fifty-Six 7.5 min. Quad



HISTORIC BRIDGE – MAIN STREET BRIDGE
MAIN STREET
LOGAN COUNTY
MASONRY ARCH
CROSSES - SILVER SMITH BRANCH
DATE OF CONSTRUCTION – 1922
BUILDER - STEVE ROBINSON AND FREEBORN LASATER -
LOCAL STONEMASONS
HISTORIC BRIDGE INVENTORY DATE - 2005
SHPO NUMBER – LO0100
HAER NUMBER -
DATE LISTED ON NATIONAL REGISTER - 7/11/2002
LAT./LONG. 35:17:22.75, -93:25:13.87



↑
North

New Blaine 7.5 min. Quad